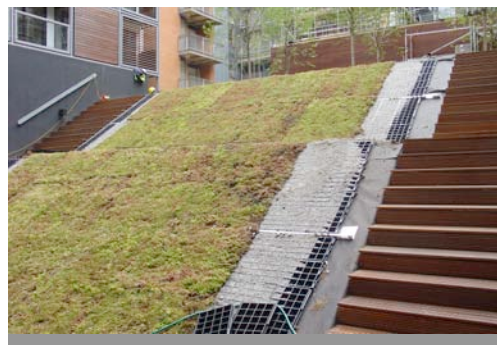




Green Roof

MOHO Housing, Manchester / Helix Roofing Ltd, Bootle



Background

The MOHO housing concept, developed by city living specialists Urban Splash, was the UK's first private housing scheme where all 102 apartments were constructed in a factory before being craned onto a six-storey steel frame and fitted together on site. The Manchester scheme features a raised garden in a central courtyard, with lawns, mature trees, plants and pathways all set over a two-storey underground car park and storage area.

Challenge

IMA contractor Helix Roofing Ltd had to install an Icopal waterproof green roof package robust enough to accommodate a 45° slope, as the garden was designed as both an outlook for the apartment balconies and an alternative access for residents. The green roof system also had to incorporate a resin-bound aggregate wearing surface to a pedestrian courtyard area which featured flush-fitting rooflights and a number of different planting and drainage elements, and which included wheelchair ramps and an internal two-metre deep tree pit.

Solution

Helix Roofing installed Icopal's heavy duty elastomeric bituminous membrane system, with built-in root inhibitors, to provide a robust roofing solution, particularly in the tree pit. The roof design was particularly complex, comprising a number of different materials and junctions, and so required ongoing cooperation and consultation between Helix Roofing, Icopal, the architect, and Urban Splash. Helix Roofing also applied Icopal's Total Torch and Rootbar systems where high quality waterproofing was required, such as in the tree pit, planting troughs, sedum areas (including those around the entrance and circular stairwell), ramps, and detailing to a rear ventilation wall. In addition, as part of the green roof, Helix Roofing installed drainage boards and filter layers, a lightweight soil mix, and extensive sedum substrate and sedum planting.

The project was named 'best in show' at the prestigious Flat Roofing Alliance (FRA) 2006 RBM Awards.

Project:

MOHO Housing Scheme, Castlefield, Manchester

Area:

300 m²

Completion Date:

June 2005

IMA Contractor:

Helix Roofing Ltd, Bootle

Client:

Urban Splash

Architects:

ShedKM, Liverpool

System:

Rootbar System, extensive sedum roof, Sure-Weld TPO to upper roof areas
